



FOOD PROCESSING MAINTENANCE SOLUTIONS WITH **DETEX**



LUBRICANT/PENETRANTS	NSF® RATING	NSF® #	CONTAINER	PART#
FOOD GRADE MACHINE & PENETRATING OIL		129000	AEROSOL	01316
FOOD GRADE SILICONE LUBRICANT		113815	AEROSOL	01716
FOOD GRADE CHAIN LUBRICANT		132899	AEROSOL	06016
HEAVY-DUTY SILICONE LUBRICANT		059820	AEROSOL	51516
FOODLUBE SUGAR DISSOLVING FLUID		147495	AEROSOL	57716
	147492	TRIGGER	57728	
		CONTAINER	57701	

GREASES	NSF® RATING	NSF® #	CONTAINER	PART#
CLEAR PENETRATING GREASE		143804	AEROSOL	06716
THERMAPLEX® FOODLUBE BEARING GREASE		117848	CARTRIDGE	70114

SPECIALTY MRO	NSF® RATING	NSF® #	CONTAINER	PART#
BELT DRESSING		134508	AEROSOL	02216
DETEX® SCOURING PAD*	N/A		PAD	59660
DETEX® EMPTY TRIGGER BOTTLE			TRIGGER	57928

*Patent-Pending

ELECTRONIC CLEANER	NSF® RATING	NSF® #	CONTAINER	PART#
FOOD GRADE ELECTRONIC CLEANER		154685	AEROSOL	58116

	NSF® CATEGORY CODE	
	H1	P1
SAFE: For use throughout facility		
INCIDENTAL FOOD CONTACT		



Scan to see DETEX® in action!



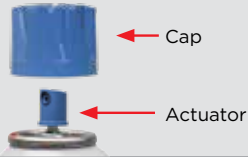
DETECTABLE COMPONENTS

DETEX® technology helps reduce the risk of foreign object contamination which can result in contaminated product, facility downtime, delayed customer deliveries and compromised brand reputation.

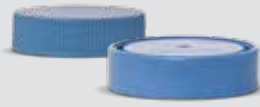
AEROSOL, TRIGGER SPRAYER, CONTAINER CAPS

Utilizing a unique patented formula, our DETEX® plastic components are both metal & X-ray detectable. Their bright blue color also helps provide added visibility within the plant.

AEROSOL



CONTAINER CAPS (BOTTLE/CARTRIDGE)



WHOLE COMPONENT	DRY MODE	WET MODE
AEROSOL		
Actuator	2.2 mm	2.5 mm
Cap	3.0 mm	> 3.0 mm
CONTAINER CAPS		
Cap + Metal Liner	> 3.0 mm	> 3.0 mm
Cap Only	> 3.0 mm	> 3.0 mm
Liner Only	> 3.0 mm	> 3.0 mm

TRIGGER SPRAYER



WHOLE COMPONENT	DRY MODE	WET MODE
TRIGGER SPRAYER		
Whole Sprayer	> 3.0 mm	> 3.0 mm
Body	> 3.0 mm	> 3.0 mm
Trigger	> 3.0 mm	> 3.0 mm
Closure	> 3.0 mm	> 3.0 mm
Metal Pin	2.5 mm	> 3.0 mm
Nozzle	2.5 mm	> 3.0 mm
Piston	2.0 mm	2.5 mm

U.S. PATENT NO. 8,980,982 B2 & U.S. PATENT NO. 9,557,311 B2

FEATURES	BENEFITS
Detectable: All plastic components are both metal & x-ray detectable and are capable of detection by most detection equipment.	<ul style="list-style-type: none"> Reduce concerns of food product contamination Assists with a facilities HACCP requirements
Visible: Blue Color stands out from foods processed at facility	<ul style="list-style-type: none"> Easily identifies items as a non-food object Helps visually identify foreign objects before end-of-line detection.
NSF-Category Product Labeling: LPS® food safe maintenance chemicals have prominently displayed NSF® category labeling.	<ul style="list-style-type: none"> Distinct labeling helps to prevent use of non NSF® approved LPS® products in the food processing area.
GRAS Listed: All DETEX® plastic component ingredients are (Generally Recognized As Safe - FDA 21 C.F.R. Sections 177 and 178).	<ul style="list-style-type: none"> Meets FDA requirements as an acceptable material for use in food processing plants.
Aerosol Can Compliance: With the Food Safety Net Services (FSNS). FDA 21 C.F.R.175.300, 1935/2004/EC.	<ul style="list-style-type: none"> Aerosol can does not contain: Heavy metals, BADGE, BFDGE, NOGE, and Bisphenol-A (BPA).

SCOURING PAD

DETEX® technology has now been brought to the professional scouring pad category. It's metal detectable and provides the durability and cleaning effectiveness expected in demanding food processing environments.



PARTIAL COMPONENT	DRY MODE	WET MODE
1" x 1" Piece (25.4 mm x 25.4 mm)	> 3.0 mm	> 3.0 mm

FEATURES	BENEFITS
Detectable: Metal particles are bonded within the blue resin and capable of detection by most metal detection equipment.*	<ul style="list-style-type: none"> Reduces the risk of foreign object contamination and expense Supports a facility's HACCP Food Safety Program
Visible: Blue color stands out from foods processed at facility	<ul style="list-style-type: none"> Easily identifies scouring pad as a non-food object Helps visually identify foreign objects before end-of-line detection
Effective: Encapsulated abrasive particles uniformly coat pad fibers	<ul style="list-style-type: none"> Consistently cleans surfaces quickly and safely
Durable: Resin bonded nylon 6 - 6 fibers	<ul style="list-style-type: none"> Withstands harsh food processing environments and resists fraying

PATENT-PENDING

*Not X-ray detectable

NOTE

- Detection limits for a particular machine depend on a variety of factors including line speed, contaminant placement and orientation, iron fortification (i.e.; flour), wet mode vs. dry mode, fragment size, aperture size, etc. It is the responsibility of the end-user to determine the detection limits of the appropriate DETEX® component for the individual line set up and for the particular food product being inspected.
- Metal and X-ray detection limits for plastic components (above) are based on whole components. Partial plastic and scouring pad components may not be detectable due to detector limitations, partial component size, malfunctioning equipment and/or the type of food product undergoing processing. Scouring pad not X-ray detectable.
- ITW Pro Brands recommends that all components be tested prior to implementation (separately and included in the processed food product) and/or consult your specific metal detector equipment manufacturer directly.
- Product shelf life, warranty, and material safety data sheets are available at www.itwprobrands.com. ITW Pro Brands is not responsible for use of this product inconsistent with its instructions and warnings.
- ITW Pro Brands is not responsible for failure to detect components due to detector limitations and/or detector malfunctions. Refer to the metal detector manufacturer's design limitations, instructions, and warnings regarding the use, limitations, and proper maintenance of the equipment.