

LONG-LIFE SEALED SPHERICAL ROLLER BEARINGS

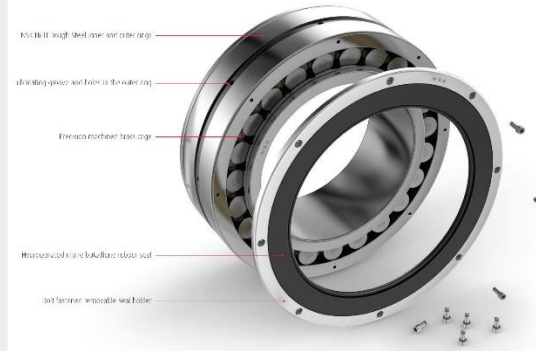
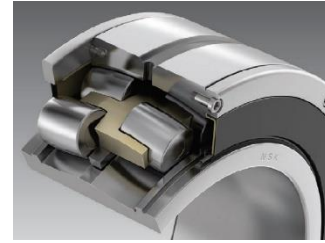
FOR MINING INDUSTRY CONVEYOR PULLEYS

NSK



DESIGNATION SYSTEM - AFTERMARKET

Dimension Series	Internal Design - High Capacity	Tapered Bore	Removable Seal Design	Radial Internal Clearance
231	60	CA	M	K
DD2	E4	C3	TF	
Bore Diameter	Cage - Machined Brass	Lubrication Groove & Holes	Material - Hi-TF Steel	



BEARING DIMENSIONS AND OPERATING VALUES

SEALED SPHERICAL NO.	BEARING DIMENSIONS			BASIC LOAD RATINGS				SPEED LIMIT	CONVENTIONAL SPHERICAL NO.
	mm			N		lbf		rpm	
	d	D	B	Dynamic	Static	Dynamic	Static	Grease	
22224CAMKDD2E4C3TF	120	215	58	480 000	525 000	108 000	118 000	1 050	22224CAMKE4C3
22226CAMKDD2E4C3TF	130	230	64	565 000	635 000	127 000	143 000	970	22226CAMKE4C3
22228CAMKDD2E4C3TF	140	250	68	680 000	765 000	153 000	172 000	890	22228CAMKE4C3
22230CAMKDD2E4C3TF	150	270	73	780 000	895 000	175 000	201 000	820	22230CAMKE4C3
22232CAMKDD2E4C3TF	160	290	80	900 000	1 050 000	202 000	236 000	780	22232CAMKE4C3
23134CAMKDD2E4C3TF	170	280	88	915 000	1 230 000	206 000	277 000	770	23134CAMKE4C3
23136CAMKDD2E4C3TF	180	300	96	1 060 000	1 400 000	238 000	315 000	720	23136CAMKE4C3
23138CAMKDD2E4C3TF	190	320	104	1 190 000	1 540 000	268 000	346 000	670	23138CAMKE4C3
23140CAMKDD2E4C3TF	200	340	112	1 360 000	1 790 000	306 000	402 000	630	23140CAMKE4C3
23144CAMKDD2E4C3TF	220	370	120	1 570 000	2 140 000	353 000	481 000	580	23144CAMKE4C3
23148CAMKDD2E4C3TF	240	400	128	1 830 000	2 470 000	411 000	555 000	540	23148CAMKE4C3
23152CAMKDD2E4C3TF	260	440	144	2 210 000	2 980 000	497 000	670 000	490	23152CAMKE4C3
23156CAMKDD2E4C3TF	280	460	146	2 330 000	3 300 000	524 000	742 000	460	23156CAMKE4C3
23160CAMKDD2E4C3TF	300	500	160	2 770 000	4 000 000	623 000	899 000	430	23160CAMKE4C3
23164CAMKDD2E4C3TF	320	540	176	3 400 000	4 850 000	764 000	1 090 000	400	23164CAMKE4C3
23168CAMKDD2E4C3TF	340	580	190	3 850 000	5 450 000	866 000	1 225 000	370	23168CAMKE4C3
23172CAMKDD2E4C3TF	360	600	192	3 900 000	5 600 000	877 000	1 259 000	360	23172CAMKE4C3
23176CAMKDD2E4C3TF	380	620	194	4 000 000	5 850 000	899 000	1 315 000	350	23176CAMKE4C3
23180CAMKDD2E4C3TF	400	650	200	4 200 000	6 300 000	944 000	1 416 000	330	23180CAMKE4C3
23184CAMKDD2E4C3TF	420	700	224	5 250 000	7 700 000	1 180 000	1 731 000	310	23184CAMKE4C3
23188CAMKDD2E4C3TF	440	720	226	5 450 000	8 200 000	1 225 000	1 843 000	300	23188CAMKE4C3
23192CAMKDD2E4C3TF	460	760	240	6 050 000	9 150 000	1 360 000	2 057 000	280	23192CAMKE4C3
23196CAMKDD2E4C3TF	480	790	248	6 550 000	10 100 000	1 472 000	2 271 000	270	23196CAMKE4C3